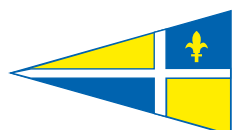




SINCE
1927



26 place du Club Nautique - 83700 - Saint Raphaël - France
+33 4 94 95 11 66 - club@cnsr.fr - www.cnsr.fr

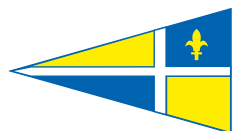


Localisation



The nearest airport is in Nice. It is an hour's drive by car. Shuttle buses and trains are available. Marseille Airport is 2 hours' drive away. Saint-Raphaël train station is a 10 minute walk to the Sailing Club. Competitors can request for organised VTC transfers.









8400



Sailing Club



The Club Nautique de Saint Raphaël brings together all those sailing enthusiasts.

Since 1927, sailors from all over the world have enjoyed sailing in the bay of Saint Raphaël, a magical place where the wind of various strengths is always present!

One of the priorities of the sailing club is its sailing school and its dynamic competition school which are FFVoile certified.

The instructors welcome young people and adults in a club equipped with a comfortable infrastructure. They pass on

with passion the secrets of sailing thanks to high-performance equipment and the pleasure of being at sea in an idyllic bay offering ideal conditions for safe sailing all year round.

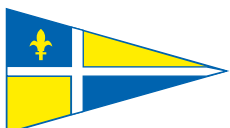
The competition school trains sailors by transmitting the requirements of the high level on Optimist, Laser/ILCA, Fun board and Windsurf with foil.

We organise more than 15 competitions a year which attract many sailors.

These regattas bring together dinghies, catamarans, windsurfs and windfoils, sport keelboats.

The Sailing Club of Saint Raphaël, one of the most active nautical clubs in the region. The Club has over 350 permanent members and 650 seasonal members.

Each year, the club's volunteers organise numerous local, national and international regattas which attract up to 3540 people annually.





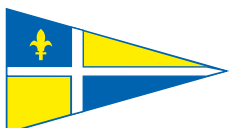
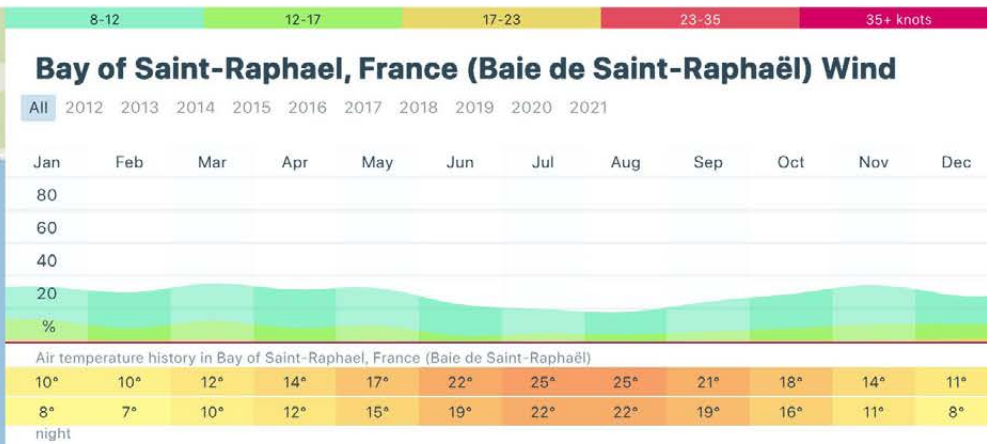
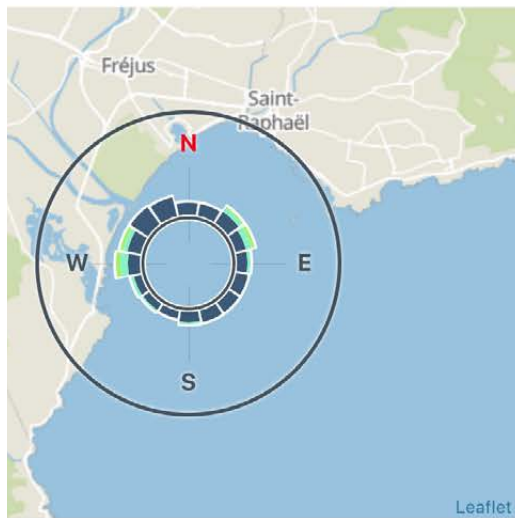


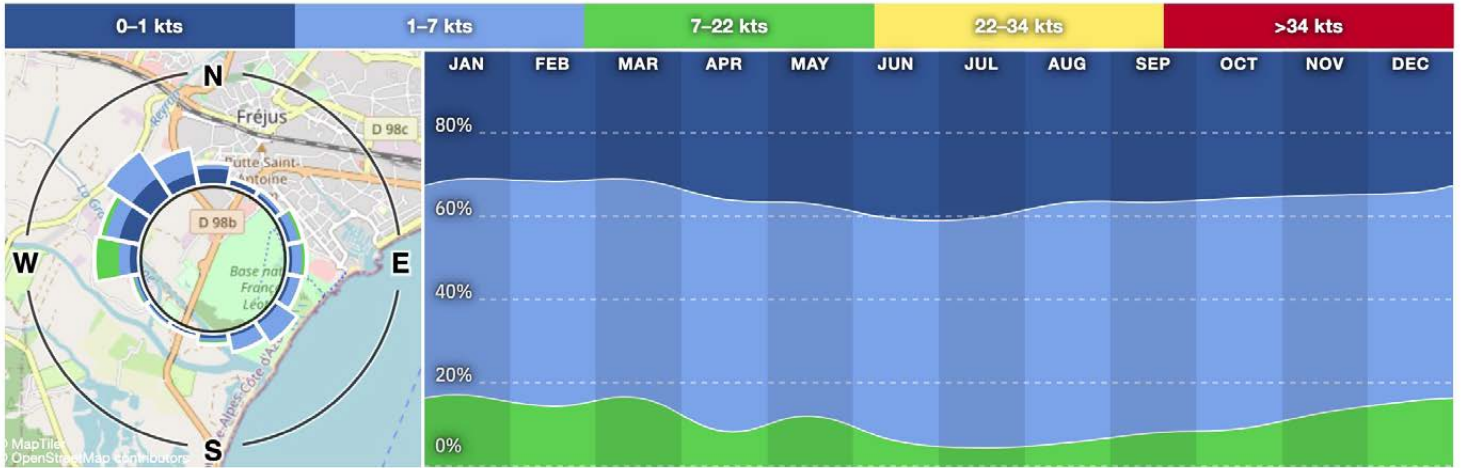


Weather conditions

<https://windy.app/fr/forecast2/spot/387231/Saint-Raphael%2C+France/statistics>

<https://fr.windfinder.com/windstatistics/st-raphael>





JAN	FEB	MAR	APR	MAY	JUN	JUL	AUG	SEP	OCT	NOV	DEC
-----	-----	-----	-----	-----	-----	-----	-----	-----	-----	-----	-----

↑🌡️ Highest measured temperature (°C)



☀️ Average daytime temperature (°C)



🌙 Average nighttime temperature (°C)



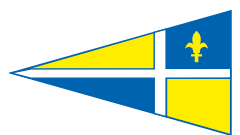
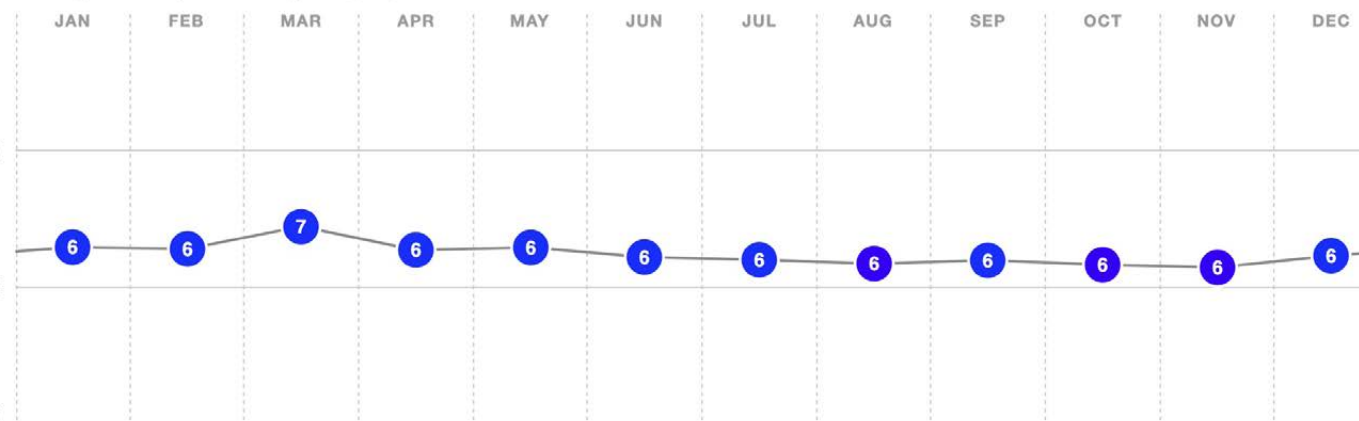
↓🌡️ Lowest measured temperature (°C)

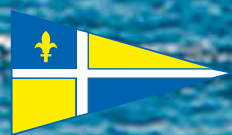


🌬️ Dominant wind direction

JAN	FEB	MAR	APR	MAY	JUN	JUL	AUG	SEP	OCT	NOV	DEC
WNW	WNW	WSW	ESE	S	SSE	SSE	S	SSW	WNW	NW	WNW

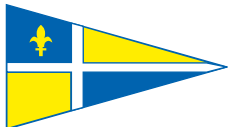
🌀 Average wind speeds and gusts (kts)







Shore Based Details



Launching / landing sites



We have several slipways:

- A new slipway 35 meters long with non-sliding plastic grids on it.
- Two beaches, one 15 meters long and the other 35 meters long.
- A 5m floating slipway







214881

FRA

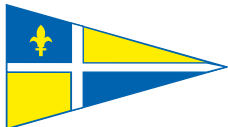
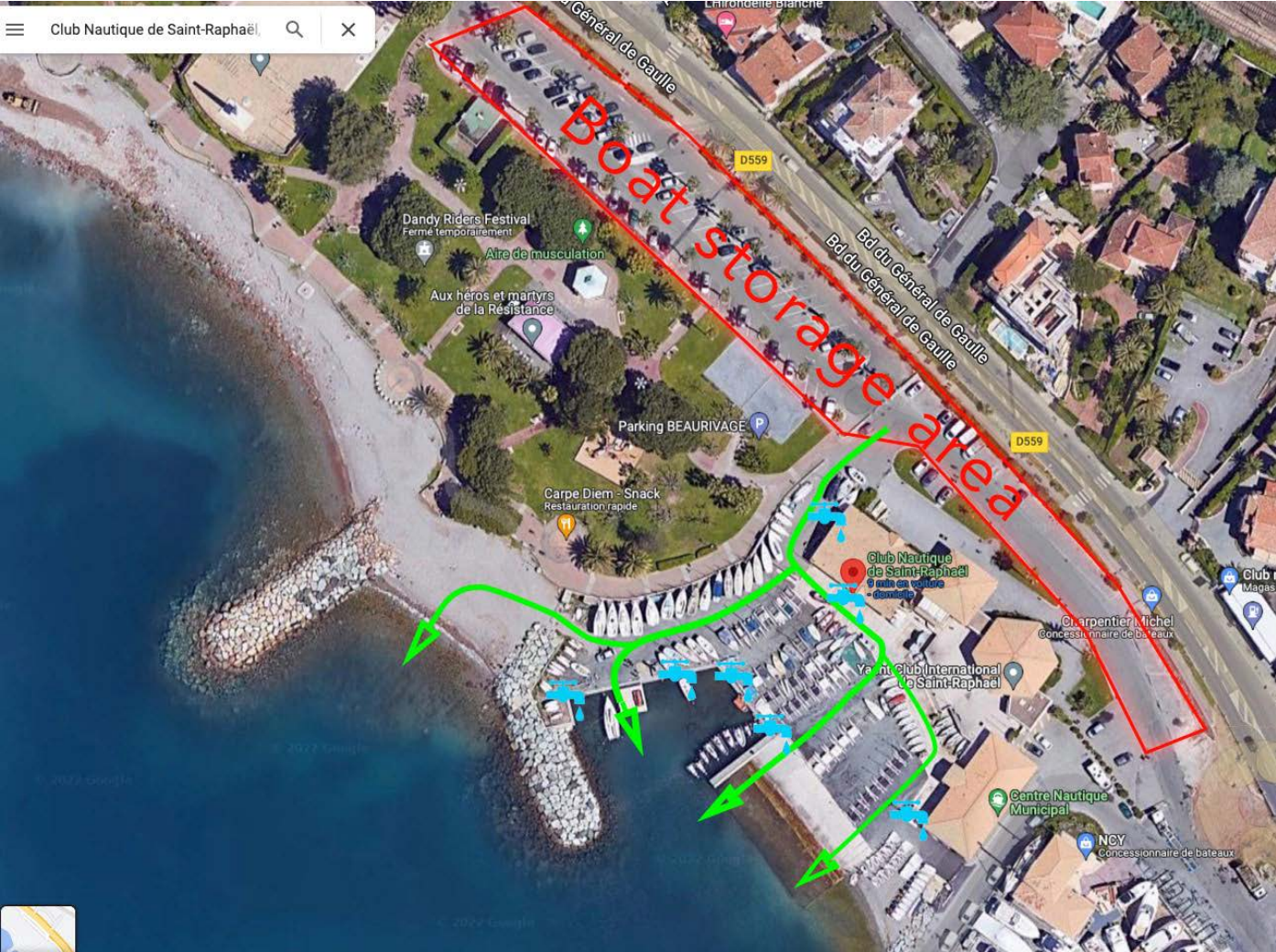
21852

RF 21705

Laser

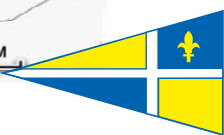
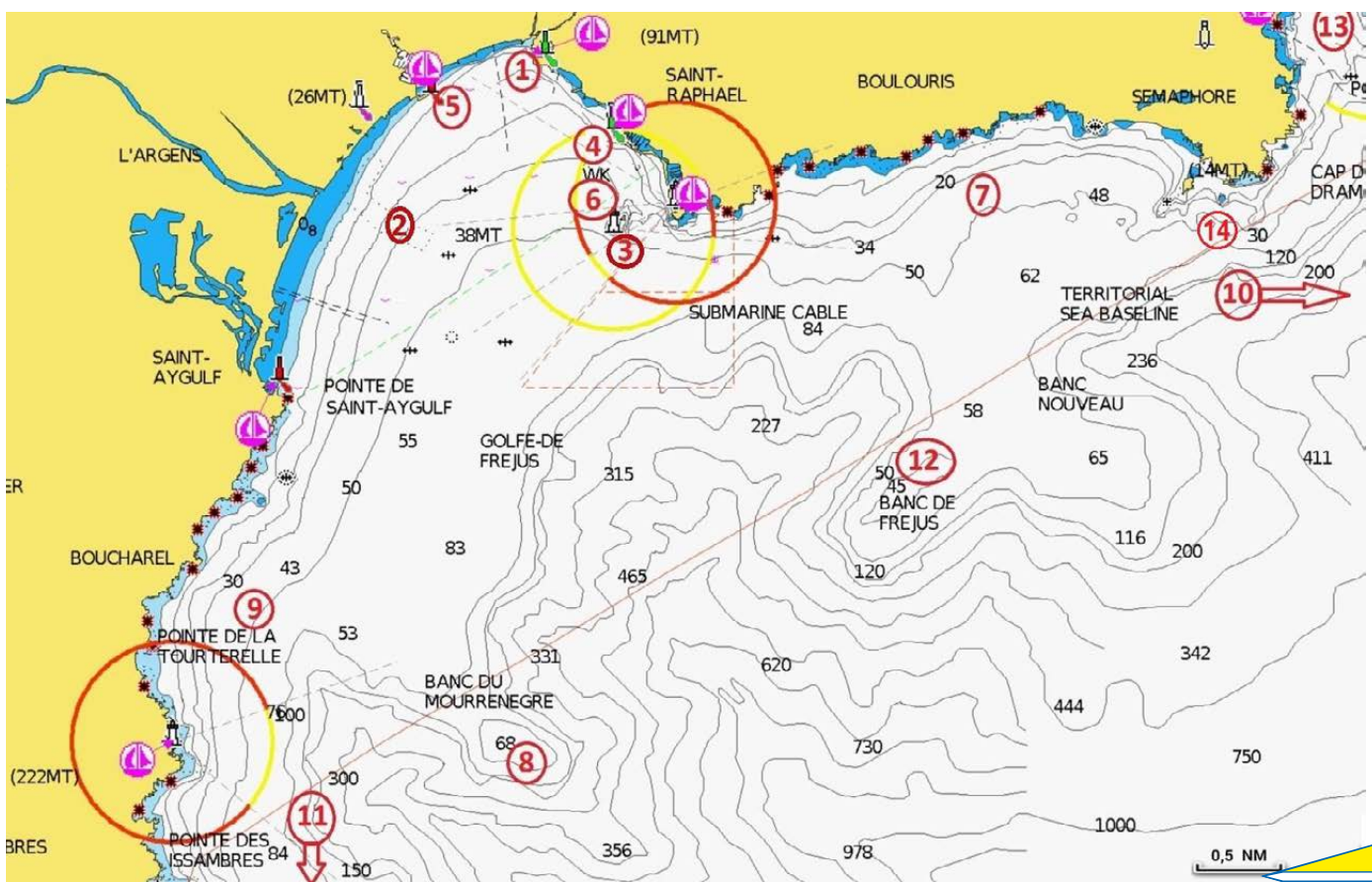
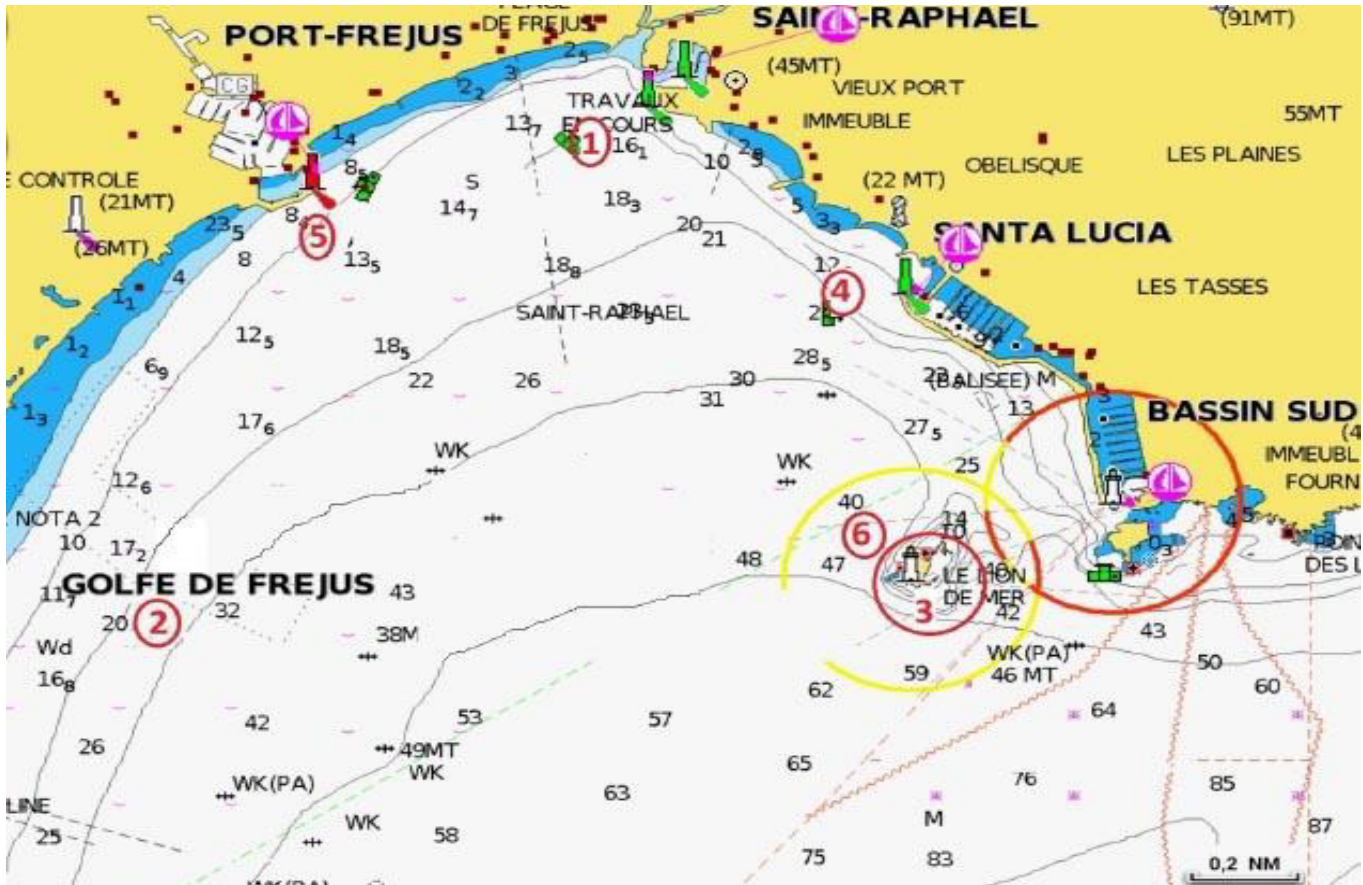


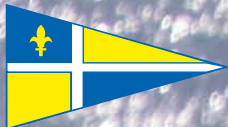
Boat storage



Water Based Details

The sailing area in the Golfe de Fréjus, all the map area







Accommodation

Saint Raphael is a touristic town with many hotels and apartments for rent. During events, most hotels offer discounts to CNSR sailors.



Groups & Teams

CREPS de Saint-Raphaël Boulouris



The Boulouris / Saint-Raphaël site, which covers 84 hectares, offers a large number of facilities to ensure you have the best possible stay.



ACCOMMODATION

The Boulouris site features a lodging facility with 174 beds.

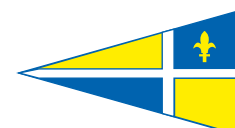
CATERING

Restaurant area with terrace and view of the pine forest. Capacity 200 people.

MEDICAL CENTRE

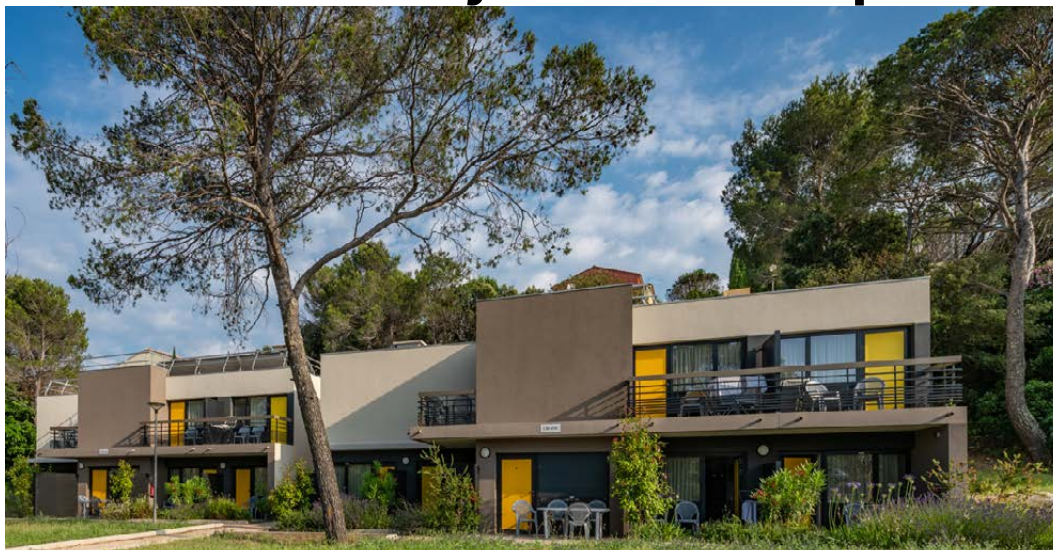
Recovery unit, cardio training ...

Réservation : <https://www.creps-paca.fr/accueil.tarifs-reservation#reservation>



Groups & Teams

UFCV - Le Haut-Peyron à Saint-Raphaël



Le Haut-Peyron is ideally suited for hosting sports groups, offering 1-star accommodations set within an 8-hectare wooded estate in Saint-Raphaël on the French Riviera.

With its own swimming pool and proximity to beaches (5 minutes by car), it's perfect for training, team-building, and relaxation.

The center's natural setting and facilities cater to a variety of sports activities, providing an ideal backdrop for both competitive and leisure pursuits. For more details on how Le Haut-Peyron can accommodate your sports group.

ACCOMMODATION

The Saint-Raphaël center offers 4 pavilions sleeping 29, plus 1 pavilion sleeping 25.

CATERING

Restaurant area with terrace and view of the pine forest. Capacity 200 people.

Réservation : <https://haut-peyron.ufcv.fr/fr/>

Best Western Plus Hotel La Marina, (5 minutes walk from the Club)

<https://www.bestwestern.fr/fr/hotel-Saint-raphael-Best-Western-La-Marina-93520>



Hotel & Spa Brise de Mer (2 minutes walk from the Club)

<https://www.hotel-brisedemer.com/>



Maeva :

https://www.pierreetvacances.com/fr-fr/fp_S1Y_location-residence-la-corniche-d-or

https://www.pierreetvacances.com/fr-fr/fp_06L_location-residence-promenade-des-bains



Office de tourisme / Local Tourist Information

information@saint-raphael.com

www.saint-raphael.com

<https://www.saint-raphael.com/fr/services/office-de-tourisme-ou-syndicat-dinitiative/saint-raphael/office-de-tourisme-de-saint-raphael-4861048/>





SINCE
1927

Contact : Lawrence Banahan
+33 680 719 902
vice-president@cnsr.fr

26, place du Club Nautique
83700 Saint-Raphaël
France
+33 (0)4 94 95 11 66 - club@cnsr.fr